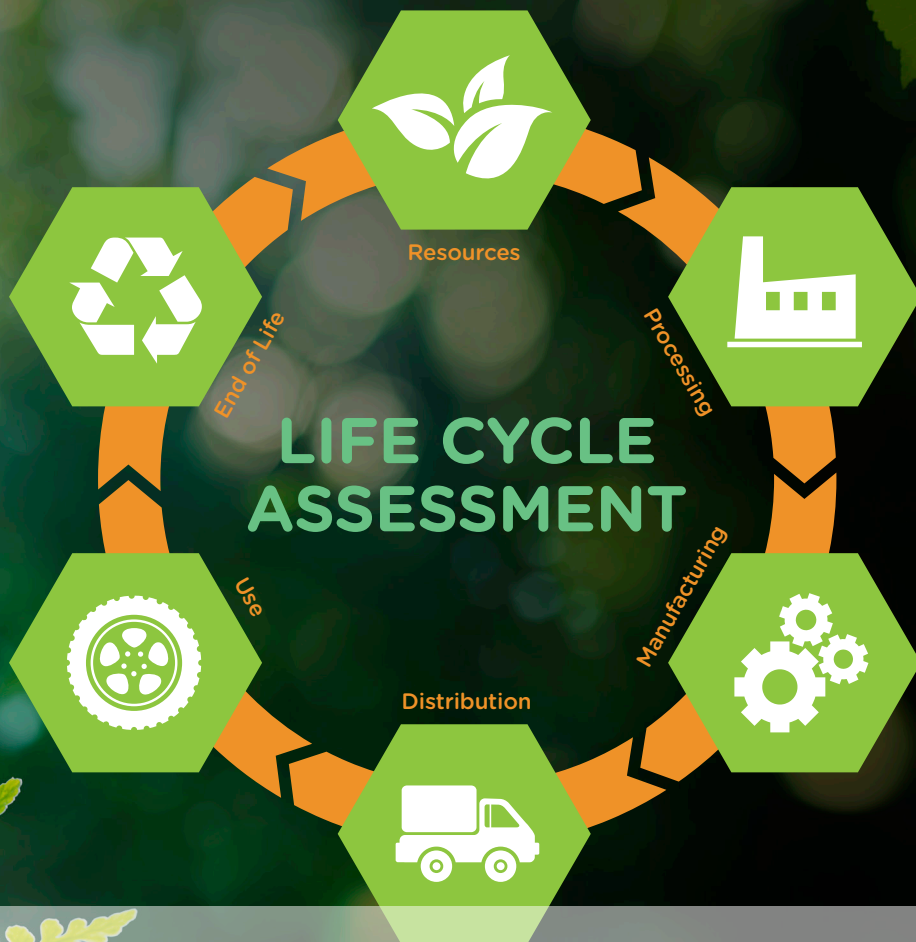


CRAY VALLEY



Ricon®

Clartack®

Krasol®

We have completed the **Life Cycle Assessment (LCA)** of our Ricon®, Krasol® and Clartack® resins produced at our largest and integrated platform located in Carling, France. A Life Cycle Assessment is a systematic analysis of the environmental impacts of products, and in our case, from raw material extraction to material production at our gates. This approach allows us to identify ways to reduce environmental impacts and improve efficiency.

We are proud to inform you that our LCA study¹ underwent rigorous scrutiny by an independent third party as required by the ISO standards. This critical review ensures the accuracy, transparency and reliability of our assessment.

Through this assessment, we identified compelling environmental benefits when using Cray Valley's renewable-based resins compared to their fossil-based alternatives:

GREENHOUSE GAS (GHG) EMISSIONS REDUCTION

Using our renewable-based resins could enable a GHG emissions reduction by at least **30% and up to 115%**.²

FOSSIL RESOURCE DEPLETION REDUCTION

Choosing renewable-based resins could reduce fossil resource depletion by at least **12% and up to 40%**.² This aligns with our goal of responsible resource management.

We believe that these results mark a significant step forward in our commitment to sustainability and our efforts to contribute positively to the environment. We invite you to contact your Cray Valley representative for more information and details about this achievement. We are more than happy to share our journey towards sustainability with you.



TotalEnergies

Disclaimer:

¹ The results of the study are based solely on facts, circumstances and assumptions that were submitted during the study. If these facts, circumstances and assumptions differ, the result may change. Furthermore, the results of the study should be considered as a whole, in relation to the assumptions, and not in isolation. The information contained in this document is given based on our knowledge of the product at the date of publishing. It is provided for informational purposes only, and without prejudice to any applicable regulations. In no event will TotalEnergies Raffinage Chimie and its affiliates assume any liability whatsoever for the accuracy or completeness of the information contained herein or reliance thereto. TotalEnergies Raffinage Chimie and its affiliate do not accept any liability whatsoever arising from the use of this information or the use, application or processing of any product described herein.

² Versus its fossil-based equivalent and depending on the feedstock selected.

www.crayvalley.com